

AS AWARDED BY ALVAREZ & MARSAL CANADA INC., COURT-APPOINTED RECEIVER OF DO ALL INDUSTRIES LTD.

# PUBLIC RECEIVERSHIP

# 2-DAY AUCTION

**WEBCAST  
& ONSITE**



**WED & THURS, JUNE 25 & 26 @ 10AM CST**

PREVIEW & INSPECTION: Monday & Tuesday, June 23 & 24 from 9am-4pm or by appointment

Estevan, Saskatchewan, Canada

MULTIPLE PREVIEW LOCATIONS  
(PLEASE SEE PAGE 2)

# \$25+ MILLION EVALUATION



**(7) INDUSTRIAL  
REAL ESTATE PARCELS**



**CAT LOADERS TO 2012**



**\$4+ MILLION INVENTORY**



**2012 KENWORTH WINCH TRUCK  
w/2013 DOEPKER FLOAT**



**(8) HYD-MECH V-18 SII  
BANDSAWS TO 2012**



**CNC PRESS BRAKES TO 2011**

Sale Conducted by



SINCE 1902

AUCTIONS | LIQUIDATIONS | APPRAISALS

75 International Blvd., Suite 102, Toronto ON | Tel: (416) 242-3560

[www.maynards.com](http://www.maynards.com)

In Conjunction with





# 2-DAY AUCTION

**DATES:** Wed., June 25, 2014 at 10am CST  
*Raw Materials, Steel, Finished Goods and Real Estate*  
 Thurs., June 26, 2014 at 10am CST  
*Fabrication Machinery, Shop Support and Rolling Stock*

**ADDRESS:** 105 McClement Rd., Hwy. 39 East  
 Estevan, Saskatchewan, Canada

**PREVIEW:** Mon., June 23 & Tues., June 24 from 9am-4pm  
 or by prior appointment  
*\*3 Preview Locations: 105 McClement Rd., Hwy. 39 East (which contains 2 of the real estate parcels); 521 6th St. (which contains 4 of the real estate parcels); Hangar (viewing by appointment only)*

**DRIVING:** Estevan is located approximately 200 kms SE from Regina SK; Approximately 485 kms SW from Winnipeg MB; Approximately 227 miles NW from Bismarck ND  
 (DISTANCES)

**HOTELS:** Best Western, 92 King St., Estevan (306) 634-7447;  
 Suburban Extended Stay, 404 Kensington Ave., Estevan (306) 634-8332; Microtel Inn, 120 King St., Estevan (306) 634-7474



**TERMS & CONDITIONS | PAYMENT:** 25% NON-REFUNDABLE DEPOSIT ON AWARD OF BID, BALANCE WITHIN 24 HOURS. PAYMENT IS CASH, CASHIER'S CHEQUE, CERTIFIED CHEQUE, WIRE TRANSFER, COMPANY CHEQUE ONLY IF ACCOMPANIED BY A LETTER FROM YOUR BANK GUARANTEEING AMOUNT OF CHEQUE FOR DEPOSIT AND/OR PAYMENT IN FULL. NO PERSONAL CHEQUES. FULL PAYMENT MUST BE MADE BEFORE REMOVAL OF PURCHASE. **REMOVAL:** LAST DAY OF REMOVAL IS THURSDAY, JULY 17, 2014, AND AS FURTHER DEFINED IN THE SALE CATALOGUE, EVERYTHING IS SOLD "AS IS, WHERE IS". ALL SALES FINAL. COST AND RESPONSIBILITY FOR REMOVAL OF PURCHASE REMAINS WITH THE PURCHASER. EVERY EFFORT WILL BE MADE TO FACILITATE REMOVAL. WHILE QUANTITIES AND DESCRIPTIONS ARE BELIEVED TO BE ACCURATE, THE AUCTIONEER, OWNERS OR COUNSEL MAKE NO WARRANTIES OR GUARANTEES EITHER EXPRESSED OR IMPLIED AS TO AUTHENTICITY, GENUINENESS OF, OR DEFECTS IN ANY LOT AND WILL NOT BE HELD RESPONSIBLE FOR ANY ADVERTISING DISCREPANCIES OR INACCURACIES. NO WARRANTIES WHATSOEVER ARE MADE AS TO CONDITION, MERCHANTABILITY OR FITNESS FOR USE OF ANY ITEM. MAY WE SUGGEST YOU TAKE FULL ADVANTAGE OF THE PREVIEW AND INSPECTION PERIOD. **SALE SUBJECT TO ADDITIONS, DELETIONS & PRIOR SALES. PLEASE CHECK AVAILABILITY OF EQUIPMENT.**

**BUYERS PREMIUMS: 15% ON-SITE, 18% ON-LINE**



Unable to attend?  
**BID LIVE, ON-LINE!**  
 Register at [www.bidspotter.com](http://www.bidspotter.com)

## CNC PLASMA CUTTING SYSTEM

- 2011 VANAD 1P44 CNC Plasma Cutter, 80" x 144" Table, Hypertherm HPR260 Plasma Power Source, CNC Touch Screen Control, s/n 901

## HYDRAULIC PRESS BRAKES

- 2011 ERMAK Power Bend 14' x 440 Ton CNC Hydraulic Press Brake, 40HP, CNC Back Gauge, HAP Series CNC Touch Screen Control, 3.94" Per Second approach speed, 14.76" Shut Height, 26.51" Stroke, 40hp Main Drive, s/n 02592-3394MT
- 2011 ERMAK CNC HAP 11 220 Ton x 12" CNC Hydraulic Press Brake, Ermak CNC HAP Touch Control, Programmable Back Gauge, 3.94" Approach Speed, 20hp Main Motor, s/n 01836-48NQVF
- 2001 HACO 20-60L 6' x 60 Ton Hydraulic Press Brake, s/n 81354
- LARGE QTY. of Brake Dies

## HYDRAULIC SHEARS

- 2011 ERMAK HGD 10' x 1/2" Capacity CNC Hydraulic Shear, Ermak HGD Series CNC Control, 30hp Main Motor
- 2005 HACO HS6 x 3103, s/n 04778-15SSYV, 18mm x 3000mm CNC Hyd. Shear, Haco SC70 Touch Control, Programmable Back Gauge, 22KW Main Motor, s/n 20426

## BANDSAWS

- (8) 2005 TO 2012 HYD-MECH V18 Series II 18" x 22" Semi-Automatic Vertical Bandsaws, Round Cap.- 17.5", Blade Size-11/4", Mitering- 60" Left & Right, 7½hp Main Motor, Power Tilt, (2) Hydraulic Vises, Coolant, 7½hp Main Motor, s/n J0609343, JL011389, JE0112295, JW0605104, JL011386, J0609345, JW1207215, J0910365
- (6) BAXTER Verticut 115B 16" Vertical Bandsaws, 2010-2013, s/n 6239, 6142, 61434, 5042, 5809, 5873
- KING Industrial Bandsaw



ERMAK 12'x220 Ton CNC Brake



ERMAK 10'x1/2" Hydraulic Shear





**KINGSLAND 125 Ton Hydraulic Ironworkers**



**ERMAK 14'x440 Ton CNC Press Brake w/CNC Control**

**PLATE ROLLS / V-NOTCHER**

- **2004 HACO** 3HBR156 60"x1/4" Capacity Hydraulic Plate Rolls, Pendant Control, s/n 4105
- **HACO** Maxi 250/6 Hydraulic V-Notcher

**HYDRAULIC IRONWORKERS**

- **(5) 2010-2012 KINGSLAND** Multi-125 125-Ton Hydraulic Ironworker 150mm x 150mm x 18mm Angle Cutting, 57mm x 15mm Punching, 600mm x 15mm Shearing, s/n 585010, 529508, 422805
- **2009 KINGSLAND** Compact 65-C 65-Ton Hydraulic Ironworker, Punching - 1½" x 7/16", Shear - 12" x 5/8", Angle - 43/4" x 43/4" x 1/2", s/n 600 167

**DRILLS**

- **2007 SMTCL** Z3050 4' Radial Arm Drill, 12" Column, 2000rpm, Box Table
- **KING & GENERAL** Drill Presses

**ENGINE LATHES**

- **2000 DMC** CDS6250C Gap Bed Engine Lathe, 500mm x 1500mm, 760mm Spindle Bore, 1700 RPM, 2 Axis DRO

**(60+) WELDERS TO 2011**

- **(18) 2011 LINCOLN** Invertec V350 Pro Arc Welders w/Lincoln VF-72 Wire Feeds
- **(14) 2010 LINCOLN** Invertec V350 Pro Arc Welders w/ Lincoln LN-7 Wire Feeds
- **(9) LINCOLN** Power Mig 255 Wire Feed Welders
- **THERMAL DYNAMICS** Cutmaster 82 Plasma Welders
- **REDDY-ARC/ MILLER** Arc and Tig Welders
- **LINCOLN** Power Mig 350 Wire Feed Welders
- **LINCOLN** Power Mig 250 Wire Feed Welders
- **LINCOLN** Ranger 305 Gas Welder
- **LINCOLN** Ranger 8 Gas Welder
- **LINCOLN** GXT Gas Welder
- **UCILOR** VCM 200 Sopt Welder
- **(NUMEROUS)** Welding Oxy-Acetylene Sets w/Gauges
- **(LARGE QTY)** Welding Materials: Oven, Wire Rods, Gauges, Etc.

**OVERHEAD CRANES (subject to buildings sales)**

- **P&H & KONE** 10-Ton Capacity Overhead Cranes, 60' Span, Pendant Controls
- **KONE** 2-Ton x 30' Free Standing Crane System w/(2) Kone 2-Ton Hoists, Pendant Controls, 60' Crane Runways

**COMPRESSORS (subject to buildings sales)**

- **(2) 2008 SULLAIR** 7500 50hp Rotary Screw Compressors, WS Touch Pad Controls, s/n 200806210071, 0033
- **(2) 2008 AIRTEK** TWP 400 Compressor
- **400 SCFM** Air Dryers, Touch Pad Controls
- **INGERSOLL-RAND** 15hp Tank Mounted Compressor
- **SULLAIR** 30hp Rotary Screw Compressor

**SHOT BLAST / PAINT BUILDING EQUIPMENT**

- **1994 FREIGHTLINER** FL 60 Sandblast Truck, w/2006 Mod-U-Blast MBM-5 BPRE Sandblast Unit and Sullair 375H Compressor
- **FORD** F-600 Sandblast Truck w/Mod-U-Blast HPN-6-BPRE Sandblast Pot, Sullair 375H Compressor and Van Air Receiving Tank
- **(2) 2008 MODU-BLAST** MBL 65PRE AB 150 PSI Portable Sandblast Wagons, Top Mounted Hoppers w/Draw Bar
- **2004 OLYMPIAN** D125P1 156 KVA Portable Generator, Perkins 18L Diesel Engine on PJ T/A Trailer
- **(2) GRACO** X-Treme Airless Paint Pumps
- **GRACO** King Polymer Pump
- **(3) RAPID** Building Dust Collection Systems

**GENERAL SHOP EQUIPMENT**

- **POWER FIRST** 12-Ton Hydraulic Shop Press
- **STERLING** Drill Bit Sharpeners
- Single and Double Pedestal Shop Grinders
- **KING / JET / GENERAL** Drill Presses
- Hydraulic Test Bench
- **2011 MACHINERY SERVICES** MSD-N-20 Hydraulic Torque Wrench w/ 2-' Dissassembly Table, Hyd. Actuated Sliding Torque Wrench, 15 HP Hyd. Power Pack
- **(2) RIDGID** 1224 Pipe Threaders



**Press Brake Tooling**



**HACO Plate Rolls**



**HYD-MECH V-18 Series II**



2007



SMTCL 4' Radial Drill



VANAD 1P44 CNC Plasma Cutter



HYPERTHERM HPR 260



(OVER 60) WELDERS TO 2011

(OVER 30,000 LBS.) Welding Wire

**BUILDING SUPPORT EQUIPMENT**

- Power Hand Tools • Angle Grinders • Saws • Gantry Crane w/Electric Hoist • Impact Guns and Drills • Chop and Mitre Saws • Torque Wrenches • Precision Measuring Equipment • Bolt Bins • Pallet Racking • Material Racking • Fiberglass and Aluminum Ladders • Chain Falls and Come-A-Longs • Porta Powers • **MOTOROLA 2 Way Radios** • Base Station and Tower • Metal Roller Stands and Saw Horses • Self Dumping and Material Bins • Flammable Cabinets • **SCOTT Air Paks** • Hydraulic Crimpers • Pallet Jacks • Steel Tables w/Vises • Portable Pressure Washers • Fuel storage Cages



SUPPORT EQUIPMENT FROM (7) FAB / PROCESS SHOPS



10F6

BAXTER Vertical Bandsaws



HACO HSLX31013 Shear



DMC Gap Bed Lathe



KINGSLAND 65 Ton Ironworker

**Maynards** CAPITAL SERVICES  
SINCE 1902

**EQUIPMENT FINANCING AVAILABLE**

- Bank Competitive Rates
- Favourable Terms
- 1-hour Approvals
- Available on Lots > \$25,000

Contact: Dean Shillington  
Financing@maynardscapital.com  
604.675.2249 / 778.668.8697  
[www.maynardscapital.com](http://www.maynardscapital.com)



2011



CAT IT 62H

2012



CAT IT 38H

2007



VOLVO L70



2003 CAT D6R XW

2012



CAT 930K

**WHEEL LOADERS**

- 2012 CATERPILLAR 930K Wheel Loader, EROPS, A/C Cab, Fork Package, Quick Change w/1,400 hrs., Forks, s/n CAT0930KHRHN00675
- 2011 CATERPILLAR 930H Wheel Loader, EROPS Cab, Quick Change, Cat 3 Yard Bucket w/1,652 hrs., s/n CAT0930HJDHC02300
- 2007 VOLVO L70F Wheel Loader, EROPS, 2-1/2 Yard Bucket w/4,400 hrs., Bucket s/n L70FV62176
- 1997 KUBOTA B2100HTSB Tractor w/Loader Attachment, 1,800 hrs., s/n 71392

**INTEGRATED TOOL CARRIERS**

- 2011 CATERPILLAR IT62H Integrated Tool Carrier w/4,059hrs, Forks, s/n CATIT62HKM5G00638
- 2012 CATERPILLAR IT38H Integrated Tool Carrier w/377 hrs., Bucket, s/n CATIT38HPJNJ00637

**DOZER**

- 2003 CATERPILLAR D6R XW Series 2 Crawler Dozer, EROPS Cab, S & T Blade, Paccar PA56 Winch, s/n CAT00D6RCAEP00203

**BUCKETS / ATTACHMENTS**

- CAT 360-3322 3.5 Yard Bucket w/Bolt-On
- CAT IT62H 4.25 Yard Bucket
- CAT IT38H 3.5 Yard Bucket w/Bolt-On
- (2) CAT 950H and 938 Boom Extensions
- CAT 950H/972H/ IT62 Fork Packages
- Fork Sets and Extensions
- (2) 18' Snow Push Buckets

**WINCH TRUCKS**

- 2012 KENWORTH T-800 Tandem Axle 30-ton Winch Truck, Cummins ISX15-500HP, Braden Winch, s/n 1XKDD40X8CR956020
- 2012 KENWORTH T-800 Tandem Axle 30-ton Winch Truck, Cummins ISX15-500HP, Braden Winch, s/n 1XKDD40XXCJ955935

**MISC. TRUCKS**

- 1987 PACIFIC Tandem Axle 24' Bed Truck, Braden Hydraulic Winch, s/n 2PT-G51327HEA01998
- 1990 FORD Garbage Truck, s/n 3FDKF-37H9MCA34291

2011



CAT 930K



Buckets / Attachments

2012



KENWORTH T-800 Winch Truck

2012



DODGE Service Truck





KUBOTA Tractor



JCB 940



JCB 940 4WD Forklifts

TO 2012



10F5

GENIE Scissor Lift



BRANDT 1545 Auger



WESTEEL Grain Hopper Bins



Torque Twister

**OILFIELD FLOAT TRAILER**

- 2013 DOEPKER 53' Tri-Axle Oilfield Float, s/n 2DEPFZ30D1028337

**JEEP / BOOSTER TRAILERS**

- 2011 SCONA T/A Self-Steering Live Roll Jeep, s/n 3E9C40C2XB3003580
- 2010 SCONA SASSB-563 Single Axle Self Steering Booster, s/n 2E9C10B1XA300302

**END / BELLY DUMP TRAILERS**

- 2013 ARNES Tri-Axle 38' End Dump Trailer, Hendrickson Suspension, 46,500 lb. GVWR, Tarp, s/n 2A9073732DA003543
- 2013 ARNES Tri-Axle 38' End Dump Trailer, Hendrickson Suspension, 46,500 lb. GVWR, Tarp s/n 2A9073739DA003138
- 2013 ARNES Tri-Axle Belly Dump Trailer, Crossgate Hopper, Hendrickson Suspension, s/n 2A9173735DA003203

**GOOSENECK TRAILERS**

- 2008 TARNEL Tri-Axle Trailer, 32" Deck, s/n 5PYAT172581007110
- 2006 LOAD MAX Tandem Axle Gooseneck Equipment Trailer, 30', s/n 518GF362861002077

**UTILITY TRAILERS**

- 2011 ROYAL CARGO Arct60 20' Trailer, Sop Fittings, s/n 2S9PK4315B3024396
- 2007 ROYAL CARGO Hydraulic Trailer, s/n 2S9PL436563017527
- 2007 UNITED Expressline Utility Trailer, Shop Fittings, s/n 48BTE12177A092311
- 2009 PJ 16' T/A Equipment Trailer, s/n 0208-76276
- DOUBLE K 16' T/A Equipment Trailer

**4X4 ROUGH TERRAIN FORKLIFTS**

- 2012 JCB 940 4x4 Rough Terrain Forklift, 4000 KG Lift Capacity, ForkPositioning, 3 Stage Mast w/ 1400hrs s/n SLP940046E085274
- 2011 JCB 940RTFL 4x4 Rough Terrain Forklift, 4000 KG Lift Capacity, Fork Positioning, 3 Stage Mast w/637hrs, s/n JCB94004K01483388
- 2007 JCB 940 4x4 Rough Terrain Forklift, 4000 KG Lift Capacity, ForkPositioning, 3 Stage Mast w/ 5027hrs s/n SLP940046E0825249
- 2006 JCB 940 4x4 Rough Terrain Forklift, 4000 KG Lift Capacity, ForkPositioning, 3 Stage Mast w/ 2804hrs s/n JCB94004E01483188
- 2005 JCB 940 4x4 Rough Terrain Forklift, 4000 KG Lift Capacity, ForkPositioning, 3 Stage Mast w/ 3161hrs s/n JCB940004P1281726
- 2005 JCB 940 4x4 Rough Terrain Forklift, 4000 KG Lift Capacity, ForkPositioning, 3 Stage Mast w/ 3161hrs s/n JCB94004E01483187

**DIESEL / PROPANE FORKLIFTS**

- 2005 FEELER FD 40C 8,000 lbs. Diesel Forklift w/Pneumatic Tires, 1,180 hrs s/n 503589
- 2012 FEELER 30CT 6,000 lbs. Diesel Forklift w/Pneumatic Tires, 67 hrs., s/n 510332
- 2011 FEELER 30CT 6,000 lbs. Diesel Forklift w/Pneumatic Tires, 105 hrs., s/n 510331
- 2010 FEELER 30CT 6,000 lbs. Diesel Forklift w/Pneumatic Tires, 300 hrs., s/n 506420
- 2011 FEELER 30CT 6,000 lbs. Diesel Forklift w/Pneumatic Tires, 420 hrs., s/n 505704
- 2005 FEELER 30CT 6,000 lbs. Diesel Forklift w/Pneumatic Tires, 264 hrs., s/n 506421
- 2005 FEELER 30CT 6,000 lbs. Diesel Forklift w/Pneumatic Tires, 1,559 hrs., s/n 504075
- CLARK 6,000 lbs. LPG Forklift, s/n P365L-13329-9489FB



OLYMPIAN 156kva GenSet



(2) MODU-BLAST Wagons



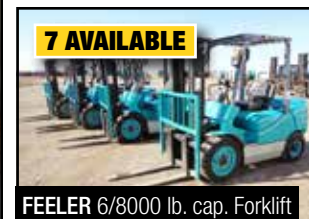
FREIGHTLINER / FORD Sandblast Trucks



FEELER 4,000 lb. cap. Forklift



GRACO Airless Pumps



7 AVAILABLE

FEELER 6/8000 lb. cap. Forklift





2011 DODGE 3500 Service Truck



(15) Service / Pickup Trucks to 2012



2012 DODGE 3500 5th Wheel



2012 FORD F-150 XLT



2012 JEEP Grand Cherokee



40' / 20' Sea Containers



2012 CHEV Silverado



PACIFIC Bed Truck



2011 FORD F-150 XLT



AMIDA Light Trailer



Several Fuel Cases



Gooseneck Trailers



2013

(2) ARNES 38' End Dump



2013

ARNES Belly Dump



2010 SCONA Booster



2011 SCONA T/A Jeep

### SCISSOR LIFTS / LIGHT TOWER

- (5) GENIE GS-1930 Scissor Lifts
- AMIDA AL400 Portable Light Tower

### SERVICE TRUCKS

- 2012 DODGE Ram 3500 Heavy Duty SLT 4x4 Service Truck w/6.7 Cummins Diesel, Knapheide Mod. 6132D54J Service Body, Underhood Rotary Air Compressor, 94 kms, s/n 3C7WD6BLXCG308173
- 2012 DODGE Ram 3500 Heavy Duty 4x4 Service Truck w/Cummins Diesel, 5th Wheel Reese Elite Hitch, RE 25 S/S Toolbox, Safety Lights, 51,568 kms, s/n 3C63D3DL-0CG149538
- 2011 DODGE Ram 3500 Heavy Duty Crew Cab Welding Truck w/ Cummins Turbo Diesel, Lincoln Ranger 305G Welder, 41,282 kms, s/n 3D6WU7CL9BG535978
- 2010 DODGE Ram 3500 Heavy Duty SLT 4x4 Welding Truck w/Cummins Turbo Diesel, Lincoln 305G Ranger Welder, s/n 3D73Y3CL7AG164698

### PICKUP TRUCKS

- 2012 DODGE Ram 2500 Heavy Duty SLT 4x4 Crew Cab Pick Up w/Cummins Diesel, 44,156 kms
- 2012 FORD F150XTR 4x4 Pick Up Truck w/6,342 kms
- 2012 FORD F150 4x4 Pick Up Truck w/13,000 kms
- 2012 CHEV Silverado 4x4 Pick Up Truck w/9,204 kms
- 2011 FORD F150XLT 4x4 Pick Up Truck w/18,201 kms
- 2011 FORD F150 Lariat 4x4 Pick Up Truck, Crew Cab, Leather Interior, 6' Box
- 2011 CHEV Silverado 1500 4x4 Crew Cab Pick Up Truck w/23,797 kms
- 2011 FORD F150XTR 4x4 Short Box Pick Up Truck w/53,199 kms
- 2011 CHEV Silverado 4x4 Pick Up Truck w/7,579 kms
- 2010 CHEV Silverado 1500 4x4 Crew Cab Pick Up Truck
- 2006 DODGE Ram 2500 Heavy Duty SLT 4x4 Crew Cab Pick Up Truck, Quad Cab, 5.7 Litre Hemi
- 2012 JEEP Grand Cherokee Laredo 4x4 Sport Utility Vehicle w/19,716 kms

### AG EQUIPMENT

- BRANDT 1545 Portable Grain Auger, EZ Trak, Kohler Pro27
- (2) WESTEEL Magnum G Hopper Bins
- SUN FLARE 1002 Skid Mounted

### SEA CONTAINERS

- (14) 40' Sea Containers, Workshop and storage Configurations
- (3) 20' Sea Containers

### UTILITY TRAILERS



2013

DOEPKER Tridem Oilfield Float





**NEW 40'/20' SHALE BINS - SINGLE & DOUBLE TAPER**



**FINISHED GOODS / NEW MATERIAL INVENTORY**

- (30) New Shale Bins: 40' and 20', Single and Double Taper, 4' and 8' Wide
- **LARGE QTY.** of Shale Bin Components- Cross Members / Divider Walls / Gussets and Brackets
- (6) Triple Skid Mud Tanks
- (3) Vac Tanks
- Centrifuge Support Stand
- (11) Pipe Rack Stands
- (5) Skidded Pipe Tubs
- 12' Diameter Cone Tank
- 8' x 40' Bin Box
- (2) Almost Complete Mixing Tanks, 60' Skid Mounted
- (60) Aluminum Truck Mtd Tool Boxes and Tool Cabinets
- (5) Steel Fabricated Fuel Cages
- Braden and Pullmaster winches
- **LARGE QTY.** of Nylon Ground Material
- (4) **SASKATOON** Model OTS-0100HP Oilfield Boilers (new cost \$57,000 each)
- **2012 RONG LI** Model F1000 Triplex Mud Pump, Skid Mounted
- (6) **RG PETRO MACHINERY** SL160 Swivels
- (3) **RG PETRO MACHINERY** SL225 Swivels
- Hook Block Set
- **RG ZP 205C** Rotary Table
- **2009 DETROIT DIESEL** 12V-2000 850HP Diesel Engine w/EMPB0800B Clutch
- **OVER 30,000 LBS.** of Welding Wire
- Shot Blast Abrasive Material



**2012 RONG LI F1000 Triplex Pump**



**Pipe Rack Stands**



**Vac Tanks**



**WIP Mixing Tank**



**RG Rotary Table**



**DETROIT 850hp Engine**



**Alum Truck Boxes**



**RG PETRO MACHINERY Swivels**



**(4) SASKATOON Boilers**



**Cone Tank**



**Skidded Pipe Tubs**



**Centrifuge Stand**



## \$4+ MILLION RAW MATERIAL, COMPONENTS AND FINISHED GOODS INVENTORY

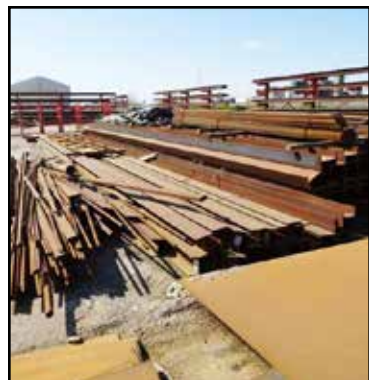
- OVER 1 MILLION LBS. Steel Inventory
- OVER 7,000 LBS. of Stainless Plate
- OVER 350,000 LBS. HSS Plate
- LARGE QTY. of Aluminum Plate and Grating
- OVER 400,000 LBS. of Beam Flange
- LARGE QTY. of Angle / Flat and Round Bar / Tube / HSS Rectangle and Square / Channel / Expanded Metal / Pipe, Etc.
- (4) 8' x 40' x 5' Steel Scrap Bins
- (30) 20 and 40' Heavy Duty Steel Material Racks to 16'

## LARGE COMPONENT INVENTORY

- Pumps / Cylinders / Valves / Valve Gates / Motors and Reducers / Rollers / Pins / Sheaves / Clamps / Couplings / Bearings / Hydraulic and Pneumatic Fittings / Large Qty. Nylon Roll Material / Hydraulic and Gear Oil
- (OVER 30) Steel Adjustable Steel Storage Racks, 2' and 40'

## OFFICE EQUIPMENT

- Executive Office Furnishings, Lunch Rooms, Conference Rooms, PC's, (2) **AYAYA/PLOYCOM** VOIP Phone Systems, (3) **TOSHIBA** Color Laser Photocopiers, **DELL** Servers, Laptops, Overhead Projectors, Etc.







As New 16,000 Sq. Ft. Shop - Main Office Building w/(14) Overhead Doors & (3) Kone OH Cranes

**(7) REAL ESTATE PARCELS AVAILABLE**

- **PARCEL 1:** New 16,104 Sq. Ft. Steel Shop Building w/(3) **KONE** 10 Ton, 60' Span Overhead Cranes and 3,960 Sq. Ft. Mezzanine / **SULLAIR** Rotary Screw Compressor / Executive Offices / On 13.66 Acres- Zoned Highway Commercial and Light Industrial
- **PARCEL 2:** (3) Buildings Complete w/Steel 4-Bay Paint Building w/ (4) Rapid Dust Collection Systems and **INGERSOLL RAND** 30hp Compressor, 2-Bay Over Flow Paint Shop w/ICE Air Make-Up System and 12'x40' Office Trailer, Sandblast Building w/(2) **SULLAIR** 7500 Air Compressors and Dryers / On 10 Acres Zoned Commercial-Light industrial
- **PARCEL 3:** 2004 Steel 10,000 Sq. Ft. Shop Building w/10 Ton Overhead Crane / .60 Acres Zoned M1-Light Industrial
- **PARCEL 4:** (2) Steel Shop Buildings, (2) **KONE** Overhead Cranes, 7,068 Sq', .60 Acres Zoned M1 Light industrial
- **PARCEL 5:** 2005/06 8,096 Sq. Ft. Steel Shop Building w/(2) 5 Ton Overhead Cranes / 1.04 Acres Zoned M1 Light Industrial
- **PARCEL 6:** .52 Acre Steel Storage Lot, Zoned M1 Light Industrial
- **PARCEL 7:** Estevan Airport Hangar, 5,040 Sq. Ft. on 10,990 Sq. Ft. Lot, Airport Lease



**PARCEL 2**



Overflow Paint Shop

4-Bay Paint Shop w/Dust Collectors



Sandblast Building





**PARCEL 3**



**PARCEL 4**



**PARCEL 6**



**PARCEL 5**



**PARCEL 7**





# PUBLIC RECEIVERSHIP 2-DAY AUCTION

**WEBCAST  
& ONSITE**

**\$25+ MILLION EVALUATION**



**WED & THURS,  
JUNE 25 & 26 @ 10AM<sup>GST</sup>**

PREVIEW & INSPECTION: Monday & Tuesday, June 23 & 24  
from 9am-4pm or by appointment

**Estevan, Saskatchewan,  
Canada**



**LATE MODEL FAB EQUIPMENT TO 2013**



**CAT LOADERS / JCB 4X4 FORKLIFTS TO 2012**



**OVER \$4 MILLION INVENTORIES**



**(7) REAL ESTATE PARCELS  
AVAILABLE FOR IMMEDIATE SALE**



Sale Conducted by

**Maynards**  
SINCE 1902

AUCTIONS | LIQUIDATIONS | APPRAISALS

75 International Blvd., Suite 102, Toronto ON | Tel: (416) 242-3560

[www.maynards.com](http://www.maynards.com)

In Conjunction with

